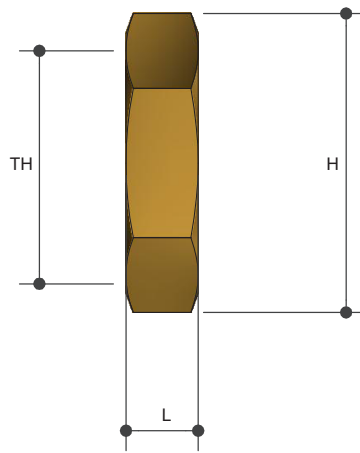
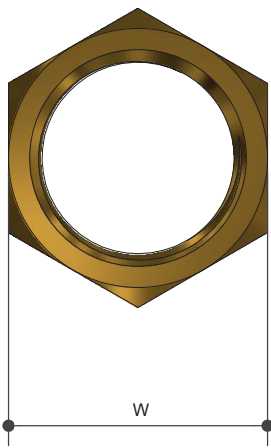


SCREWED BRASSWARE

Lock Nut

Product Specifications



Specifications

Working temperature 1°C - 95°C
Maximum pressure rating 1600kPa

Sizing Chart (MM)

	L	H	W	TH
AW4997	5	16	14	G 1/8"
AW4998	6	19	17	G 1/4"
AW4999	6	24	21	G 3/8"
AW5000	6	29	26	G 1/2"
AW5000NB	6	29	26	G 1/2"
AW5000C*	6	29	26	G 1/2"
AW5001	7	35	31	G 3/4"
AW5001C*	7	35	31	G 3/4"
AW5002	7	44	39	G 1"
AW5003	9	50	47	G 1 1/4"
AW5004	9	62	54	G 1 1/2"
AW5005	9	71	67	G 2"

* Chrome Plated

Features

Watermark approved
Brass and chrome finish
Tested and certified to AS 3688



Material Chart

Part	Material
Nut	Brass

For more information on Metforge, contact:
Austworld 15 Activity Crescent, Molendinar, Queensland 4214 Australia
P. 1300 780 430 F. 1300 780 441 E. info@austworld.com.au

Austworld Pty Ltd. All rights reserved 2018. Austworld and Metforge are registered trade mark belonging to Austworld Pty Ltd.

