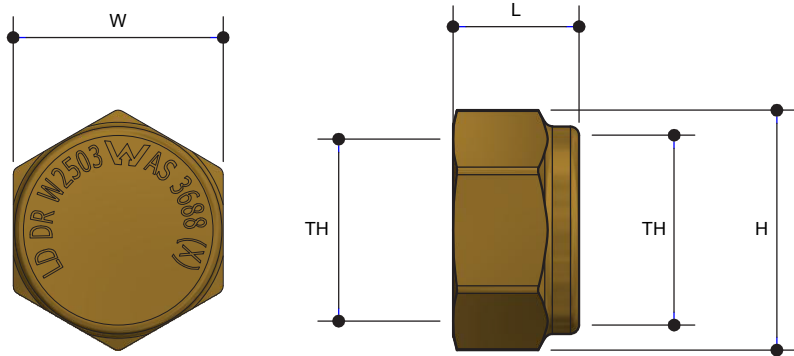


SCREWED BRASSWARE

Hexagon Cap

Product Specifications



Specifications

Maximum working temperature 0°C to 60°C

Maximum pressure rating 1600kPa

Sizing Chart [MM]

	L	H	W	TH
AW535	14	27	24	G 1/2"
AW536	14	27	24	G 1/2"
AW537	20	36	32	G 3/4"
AW537-1	22	40	38	G 1"
AW538-2	25	50	47	G 1 1/4"
AW538-3	27	58	54	G 1 1/2"
AW538-4	30	71	66	G 2"

Features



Watermark approved

DR Brass

Tested and certified to AS 3688

For more information on Metforge, contact:

Austworld 15 Activity Crescent, Molendinar, Queensland 4214 Australia

P. 1300 780 430

F. 1300 780 441

E. info@austworld.com.au

Austworld Pty Ltd. All rights reserved 2018. Austworld and Metforge are registered trade mark belonging to Austworld Pty Ltd.

