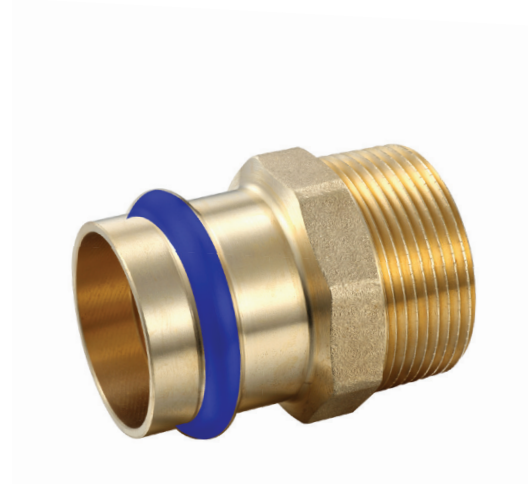
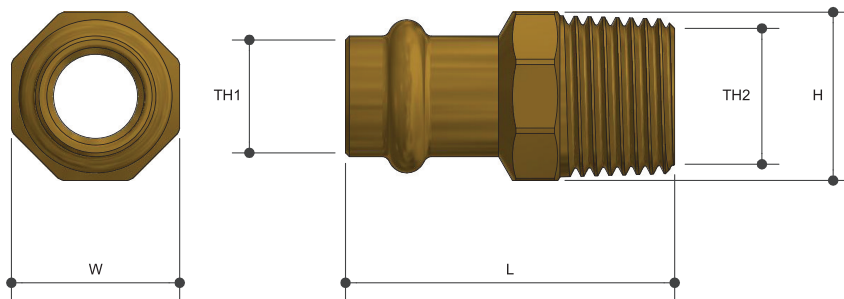


# WATER FITTINGS - BRASS

## Union MI

### Product Specifications

**METPRESS™**  
SUPERIOR PRESSFIT SYSTEM



### Features

Watermark approved

DR Brass

100% pressure tested

Tested and certified to AS 3688

### Specifications

Working temperature -20°C to 120°C

Max. pressure rating 2000kPa

### Sizing Chart (MM)

	L	H	W	TH1	TH2
PFW140	43	22	22	DN15	R 1/2"
PFW141	49	29	27	DN20	R 3/4"
PFW142	55	36	34	DN25	R 1"
PFW143	57	46	43	DN32	R 1 1/4"
PFW144	43	23	22	DN40	R 1 1/2"
PFW145	43	24	22	DN50	R 2"
PFW221	93	29	80	DN65	R 2 1/2"
PFW223	100	33	93	DN80	R 3"

### Material Chart

Part	Material
Body	DR Brass
O Ring	FKM

For more information on Metpress fittings, contact:  
Austworld 15 Activity Crescent, Molendinar, Queensland 4214 Australia  
P. 1300 780 430 F. 1300 780 441 E. info@austworld.com.au

Austworld Pty Ltd. All rights reserved 2020.  
Austworld and Metpress are registered trade mark belonging to Austworld Pty Ltd.

